



SAP's Integration Strategy | H1 2024

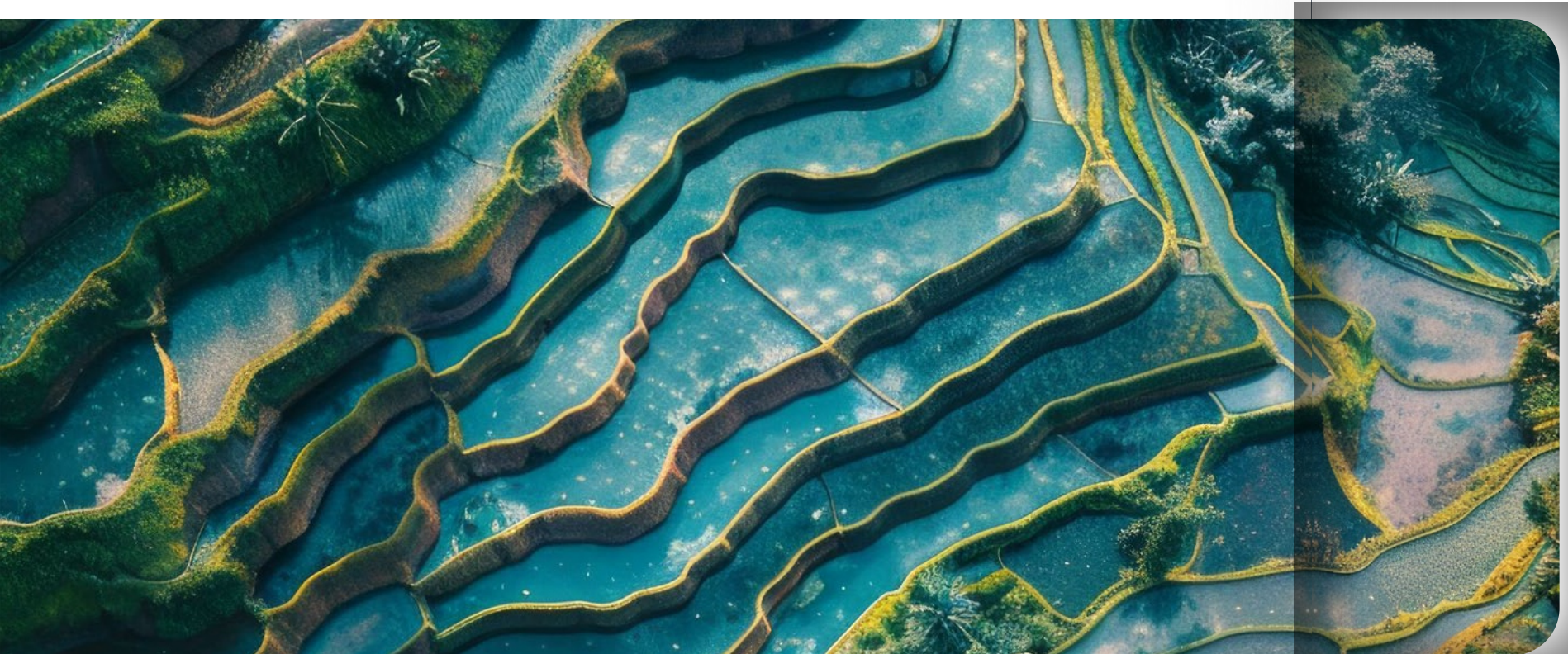
# **Integrate to Innovate**

## SAP's Integration Strategy White Paper





Application and technology landscapes continue to evolve rapidly. Businesses face a mix of different technologies and applications that come with their own, individual integration needs. How do you overcome these integration challenges and drive growth and innovation to future-proof your business? SAP's holistic integration strategy for both SAP and third-party software will guide and support you through your transformation journey.



## Content

- 04 SAP's Integration Strategy**  
Connect technology and business across people, processes, and data
- 06 Delivering on Our Integration Promise**  
Benefit from simplified integration across SAP, partner, and third-party applications
- 08 Integrate to Innovate**  
Navigate dynamic markets with purpose-built innovation on an integrated foundation
- 10 Process Transformation**  
Optimize your business operations for a unified, agile, and responsive organization
- 20 Underpinning Technology**  
Integrate and extend your processes and data with an AI-assisted platform
- 24 Tools and Services**  
Use tools and services from SAP and our partner network to support you at every step along your way



# SAP's Integration Strategy

**In times of constant change, staying agile and innovative is more important.**  
As business leaders, you must make decisions about innovation and help your organization become future-proof. This requires a strategy that connects your technology landscape to your business goals, ensuring strong and agile integration across business functions and processes. Integration is a key lever that unleashes innovation and business growth, making use of the power and intelligence of your business data. This integration strategy from SAP helps you build one experience across SAP, partner, and third-party solutions to help future-proof your business.

2x

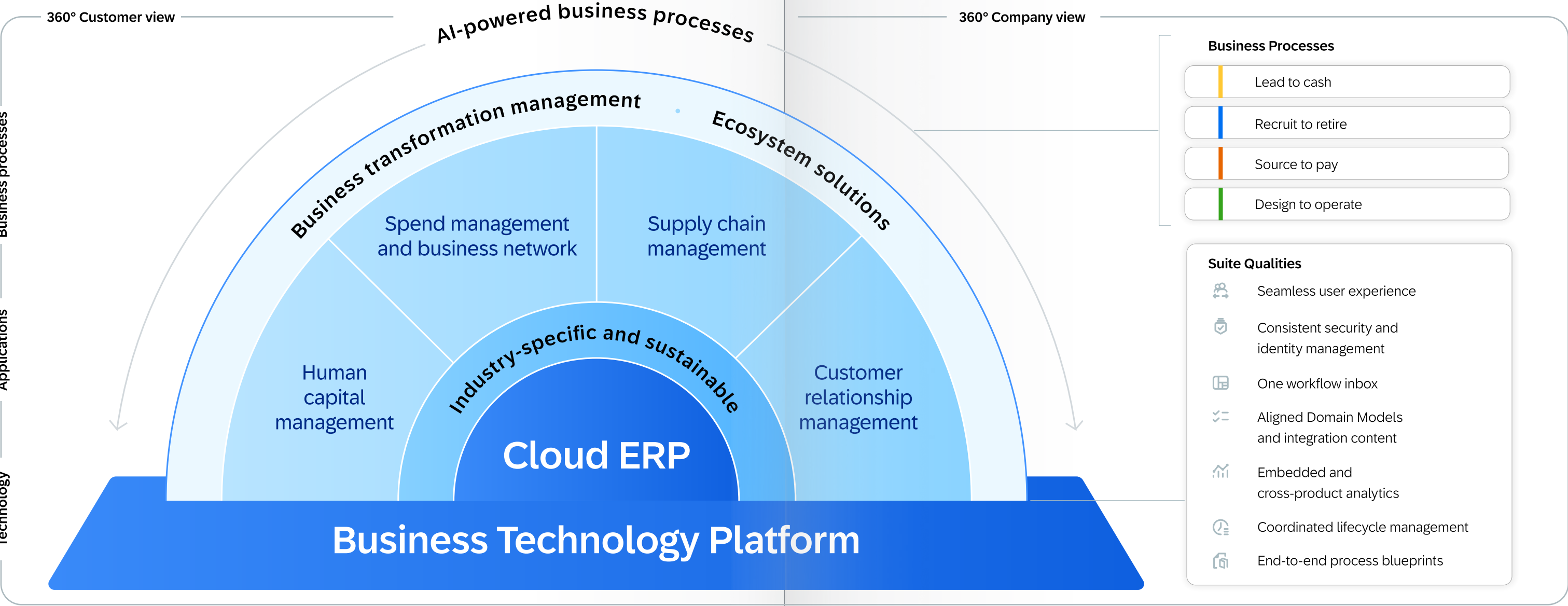
increase in integration investments expected by 2027<sup>1</sup>

42%

expect to lower operating costs by adopting automation technologies<sup>2</sup>

31%

of LOB leaders struggling to tie integration technologies to business impact<sup>3</sup>





# Delivering on our integration promise

When our customers aspire to achieve agility at scale, transform industries, or solve climate change, the biggest challenge of all, SAP stands alongside them with technology and applications. Our solutions are not just innovative but also deeply integrated with AI. In today’s complex world, IT and business are increasingly intertwined. We help our customers to bring out their best by running on truly integrated processes and turn visions into reality.

In recent years, we have laid a strong integration foundation, and our roadmap for 2024, and beyond is loaded with even more innovations. With our deep enterprise knowledge and robust capabilities, we help our customers to simplify their business transformation journey.



Juergen Mueller

Member of the Executive Board of SAP SE  
Chief Technology Officer



Muhammad Alam

Member of the Executive Board of SAP SE  
SAP Product Engineering



Thomas Saueressig

Member of the Executive Board of SAP SE  
Customer Services and Delivery



Our holistic integration approach has already yielded measurable outcomes, **showing we are on the right path forward.**

## STIHL

To keep up with fast-changing markets, customer demand, and disruption, STIHL deployed SAP solutions for extended planning and analysis. Now, the company is making data-driven decisions based on a single source of truth.

- **1 source of truth** across S&OP and financial planning
- **3x faster processes** based on automated gross margin planning
- **2x greater** resource utilization planned midterm through analysis

[Learn more](#)

## PILLER

BLOWERS & COMPRESSORS

The company used SAP Business Technology Platform for user and system integration to harmonize access management and create a role-based digital workplace.

- **80% faster** access to the most important business workloads
- **100%** of employees able to access PILLER Work Zone for daily tasks
- **4 intranet zones** for employees, managers, and learning

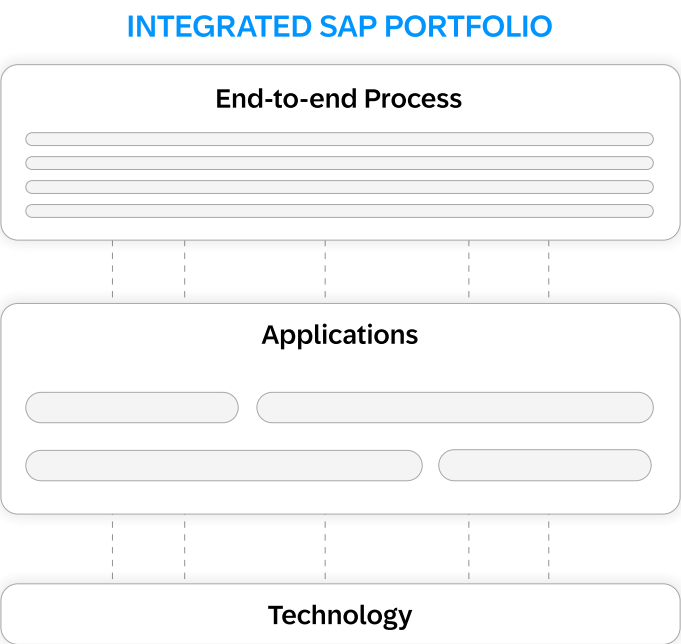
[Learn more](#)



# Integrate to innovate

Navigating dynamic markets with purpose-built innovation based on an integrated IT landscape.

Businesses of all sizes, in every industry, are struggling under the weight of disjointed and disparate technology stacks. This can hinder a company's ability to digitalize end-to-end business processes and explore new business opportunities and models. That's where integration comes in.



Starting with our platform technology, we provide a foundation for application integration and extension to a robust ecosystem of solutions, data, and AI.

Our industry-leading business applications work together to span front-end and back end-systems, making use of powerful platform capabilities to enrich the experience of or add functionality to our applications.

We bring these components together, offering a suite that enables the essential business processes of modular cloud ERP: Lead to cash, recruit to retire, source to pay, and design to operate. These processes become even more valuable when they are connected across company borders – through each business, the overall value chain thrives.

## An integrated enterprise allows you to:

- Get a real time view of your business and data across your business
- Innovate faster, since your data is consistent across applications
- Lower your total cost of ownership (TCO) by running on a leaner and more streamlined IT architecture, replacing technical debt that was used to connect applications
- Modernize your IT to reap the benefits of cloud-native applications, such as agility, flexibility, and resilience

With SAP's holistic integration approach, we want to provide a foundation for companies to break down departmental silos and adopt dynamic, cross-functional business processes to deliver optimal experiences.



## Spark innovation on an integrated foundation

When processes and data are truly integrated across the value chain, businesses can unfold the power of the latest technologies that allow them to not only react to change but also anticipate what's coming – and be prepared for it. SAP software innovations help thousands of customers worldwide work together more efficiently and use business insight more effectively. Below are some examples.

- **AI built for business**  
Obtain powerful insights and predictions with comprehensive AI capabilities built into your SAP business applications. Generative AI is opening up new avenues for innovation and growth for businesses – from unlocking valuable insights and helping make better decisions, to automating manual tasks. [learn more.](#)
  - **Business process redesign**  
Bridge process and system reality with SAP Signavio and LeanIX solutions, to guide companies through each phase of their business transformation. This allows them to get clarity and guidance on how to improve their business operations, processes, and outcomes. [learn more.](#)
  - **Cloud migration toward a clean core**  
Preserve business agility when moving to a cloud-based ERP system. Keep the core clean by using SAP Business Technology Platform (SAP BTP) to develop customizations that foster business differentiation in an upgrade-stable and cost-efficient way. [learn more.](#)
  - **Enterprise resource planning**  
Take advantage of SAP's ready-to-run cloud ERP, with AI and analytics capabilities to help move companies' business forward. SAP S/4HANA Cloud is ERP to meet your business needs – from mission-critical operations to business-model innovation. [learn more.](#)
  - **Data and analytics solutions to give data purpose**  
Get maximized value out of your data to drive impactful business decisions. Based on an open, modern data stack, our data and analytics solutions can help you quickly integrate, model, manage, and use data from anywhere. [learn more.](#)
  - **Innovation and automation on an enterprise-grade platform**  
Tap the power of SAP BTP to extend and personalize SAP applications, integrate and connect landscapes, and unleash business users to connect processes and experiences, make decisions with confidence, and drive business innovation – all in one unified environment. [learn more.](#)
  - **Mobile experience**  
Make use of native mobile SAP solutions to help improve people's work lives. Whether you adopt native apps from SAP or build your own using SAP technology, mobile offerings from SAP, such as SAP Mobile Start, help simplify processes, boosting efficiency and resilience. [learn more.](#)
- SAP Innovation Awards 2024**

Get inspired by forward-thinking customers and partners who have leveraged cutting-edge SAP products and cloud technologies, including AI or generative AI. [Learn more.](#)



# End-to-end business processes

## What are the benefits of the suite of integrated applications from SAP?

Adapt faster to your market with a suite of integrated applications from SAP that help streamline and optimize your business operations. With seamless data flow, you'll gain realtime insights, automate processes, and enhance decision-making across procurement, HR, supply chain, customer relationships, and more. This integrated approach enables a unified, agile, and responsive organization.



### Lead to cash

Cover your business process from initial contact with a prospective customer to order fulfillment and service delivery, driving revenue opportunity and optimizing the experience along the customer journey.

- Create flexible business models
- Gain order flexibility and transparency
- Reduce carbon footprint
- Speed up quote generation
- Contextualize across touch points
- Centralize master data

[Learn more](#)



### Design to operate

Encompass the lifecycle, ranging from design to planning, manufacturing, delivery, and finally operations. Leverage the interoperable and modular framework of supply chain management solutions from SAP to run a resilient and sustainable supply chain.

- Deliver innovative and sustainable products
- Plan better with a synchronized view
- Streamline processes with subcontractors
- Optimize production resource utilization
- Optimize through machine learning
- Increase shop-floor efficiency

[Learn more](#)



### Source to pay

Optimize, simplify, and effectively manage spend processes and categories to drive business outcomes – facilitating the transition from digital to autonomous procurement with lower TCO, and leveraging the collective intelligence and network effect of the marketplace.

- Reimagine the buying experience
- Improve collaboration visibility
- Minimize spending risk
- Realize savings and cost benefits
- Improve contract negotiations
- Build external workforce resilience

[Learn more](#)



### Recruit to retire

Understand, manage, and optimize aspects of the workforce (employees and external workers) in line with business objectives and with clear financial impact – facilitating exceptional workforce experiences and business transformation.

- Enable transparent organization & quick hiring
- Help ensure a secure and viable workforce
- Make HR work flow better
- Streamline multiple work assignments
- Enable faster invoice transactions
- Transform travel and expense management

[Learn more](#)



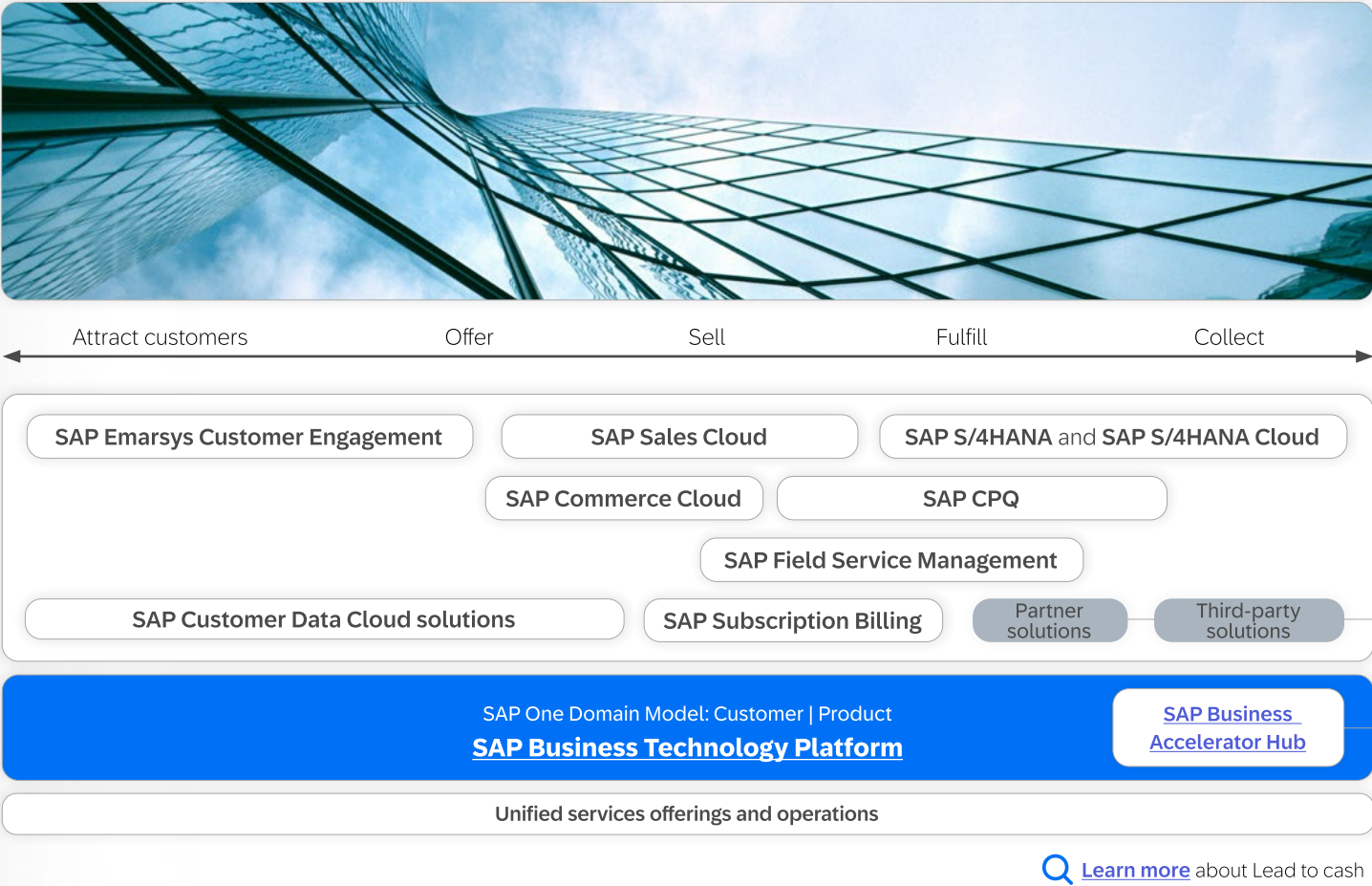
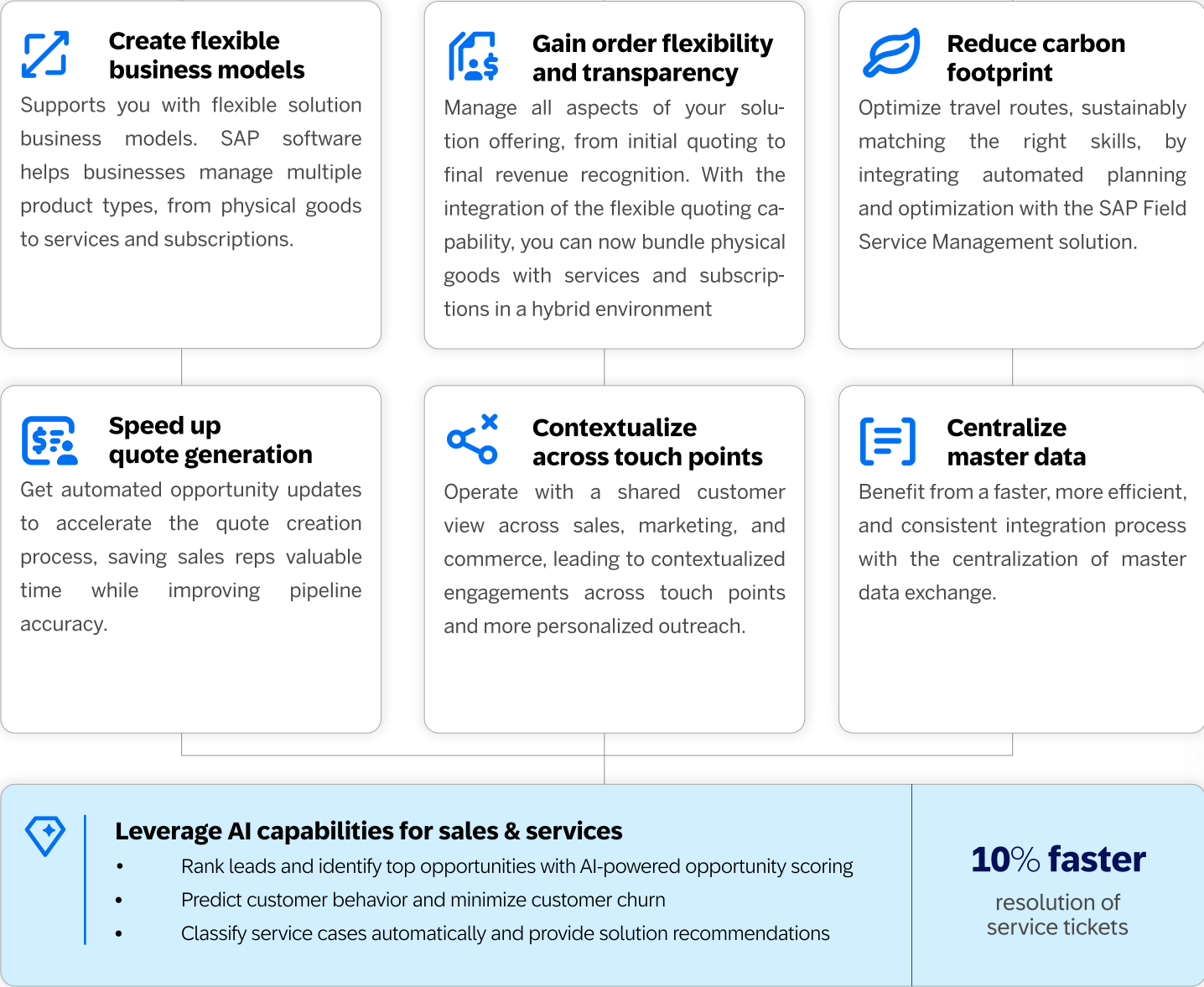
# Lead to Cash

Cover your business process from initial contact with a prospective customer to order fulfillment and service delivery, driving revenue opportunity and optimizing the experience along the customer journey.

**LGMG**  
**25% faster**  
order processing  
[Learn more](#)

**Vileda**  
**>10% improvement**  
in the sales forecast deviation  
in some countries  
[Learn more](#)

## Top transformative business outcomes to date



## Deliverables for 2024

- 01** The newest sales process for make to order within the SAP CPQ solution and SAP S/4HANA Cloud supports the sales rep for more-advanced product order configurations, including sets and multilevel configurations, as well as individualized and flexible quotes for complex deals. This delivery further shortens average sales cycles for customers within the discrete manufacturing and mill products industries.
- 02** Real-time integration of orders from those who use the B2B storefront in the SAP Commerce solution with SAP S/4HANA Cloud Private Edition offers several benefits for invoice handling. These include enhanced accuracy and efficiency in generating invoices, streamlined order-to-cash processes, and improved customer satisfaction through faster invoice delivery.
- 03** Improved integration between SAP Commerce and SAP Order Management foundation streamlines order processing and improves efficiency. Real-time data synchronization between the two helps ensure accurate inventory management and order tracking, and also enables collaboration with suppliers and customers, resulting in enhanced communication and stronger relationships.

## Outlook

- 01** Integration between SAP Commerce and the SAP Order Management solution for sourcing and availability will allow consumers to check product availability at different stores and manage reservations for the “buy online, pick up in store” feature. The new feature will increase foot traffic to the stores, reduce shipping costs, and allow stores to engage with consumers on their preferred channel.
- 02** Integration between SAP CPQ and the solution sales component in SAP S/4HANA Cloud Private Edition for billing and revenue innovation management will bring about additional flexible pricing models for solution selling. This new pricing model will enable customers to offer a recurring charge capability for various types of products based on consumption or tiered pricing.
- 03** By replicating service contracts from the SAP S/4HANA Service solution to SAP Field Service Management - without using the integration middleware - the new, simplified architecture will enable customers (even for multicompany assignments) to minimize integration complexities, reduce latency, and improve response times, leading to enhanced overall system performance and reduced integration cost.







# Source to Pay

Optimize, simplify, and effectively manage spend processes and categories to drive business outcomes – facilitating the transition from digital to autonomous procurement with lower TCO, and leveraging the collective intelligence and network effect of the marketplace.

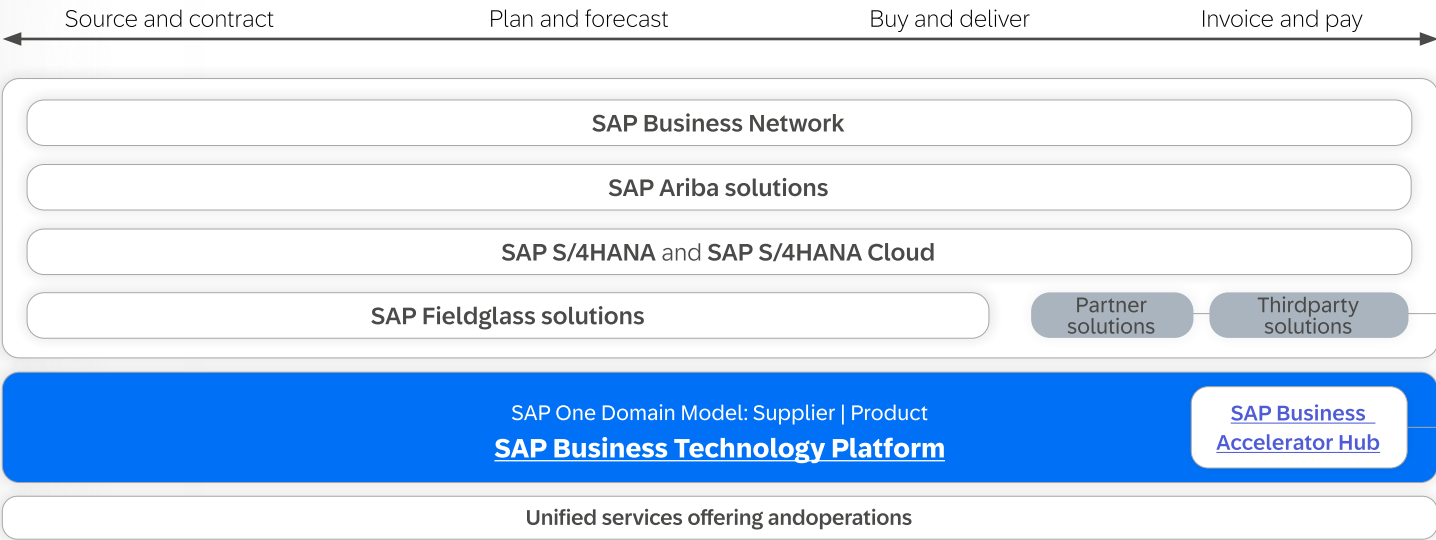
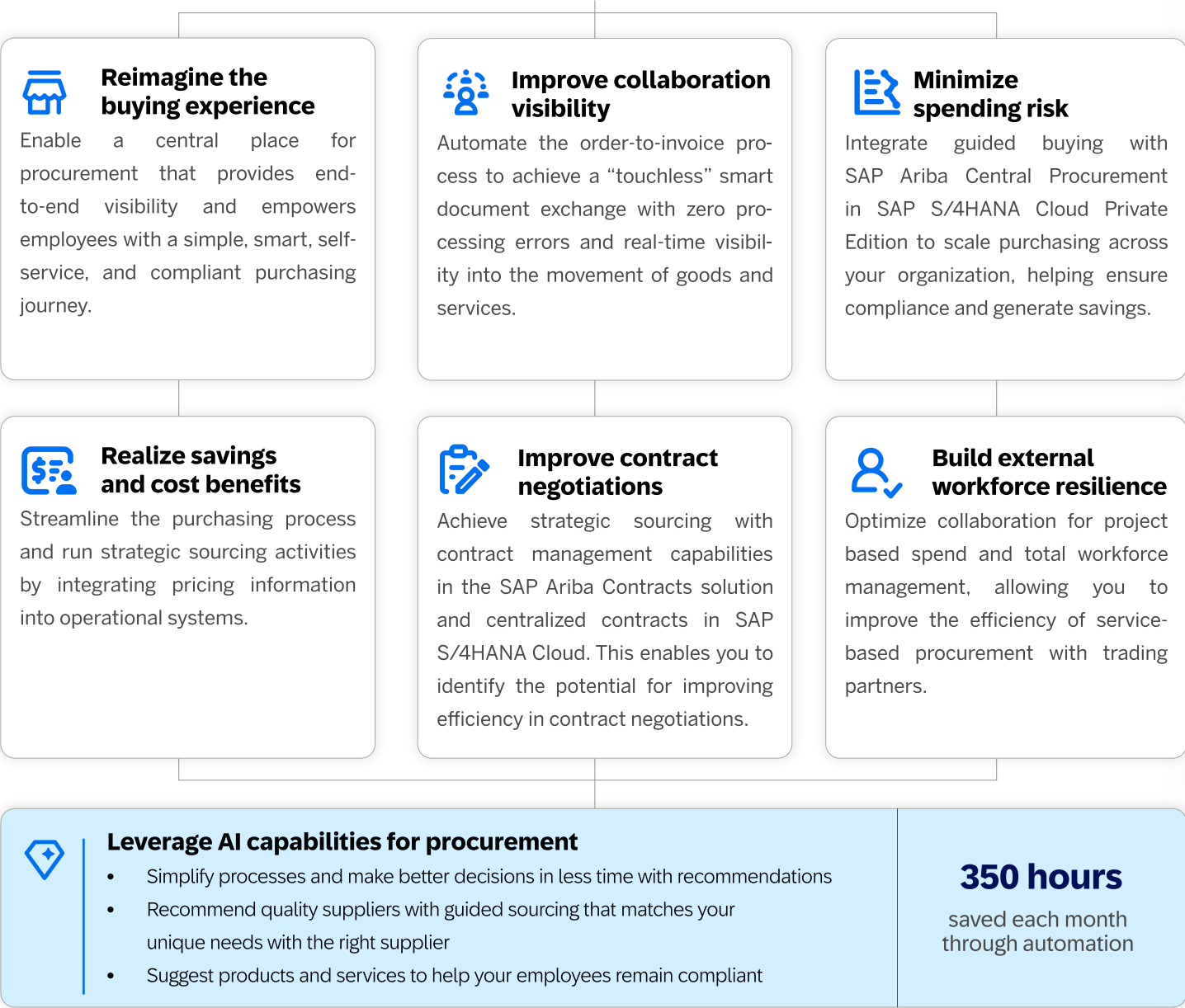
Maastricht University  
**20% reduction**  
in operational costs

[Learn more](#)

Brussels Airport  
**4 months**  
to already see efficiency gains  
and results

[Learn more](#)

### Top transformative business outcomes to date



[Learn more](#) about Source to pay

### Deliverables for 2024

- 01 The SAP Ariba Central Invoice Management solution integrates with SAP S/4HANA Cloud Public Edition for a three-way match, matching invoices against purchase orders as well as against goods receipt documents. This leads to better process compliance, less maverick spend, and a higher degree of automation in the accounts payable processes.

02 Integration of the Icertis Contract Intelligence solution with SAP Ariba Contracts and the SAP S/4HANA Cloud solution for enterprise contract management enables intelligent and interactive contract and legal document assembly, authoring, collaboration, and post execution obligation management. This results in increased productivity for legal teams and enables efficient delivery of purchasing terms.

03 Integration of the SAP Ariba Supplier Lifecycle and Performance solution with SAP S/4HANA Cloud allows supplier performance data to be exported into the supplier operational scorecard panel to track KPIs. By knowing the performance of suppliers, businesses can support them in improving their capabilities and enhance mutual business relationships.

### Outlook

- 01 With additional purchasing scenarios to be implemented between the SAP Ariba Sourcing solution and SAP S/4HANA Cloud, buyers will not only have access to both local and central procurement but will also benefit from the capabilities of the SAP Ariba supplier quotation and contract price renegotiation bundle in SAP S/4HANA Cloud, resulting in enhanced strategic sourcing abilities.

02 By automating the integration setup for buyers between SAP S/4HANA Cloud and SAP Business Network, customers will be able to simplify and enhance business partner collaborations, reduce time to onboard trading partners, and improve the onboarding experience for stakeholders.

03 By integrating the SAP Spend Control Tower solution with SAP S/4HANA Cloud solution, SAP Ariba solutions and SAP Concur solutions, enterprise spend data can be aggregated, analyzed, and presented in a unified view. This integration will enable automated supplier matching, category labeling, and third-party supplier data enrichment, resulting in better spend control and decision-making.



# Recruit to Retire

Understand, manage, and optimize aspects of the workforce (employees and external workers) in line with business objectives and with clear financial impact – facilitating exceptional workforce experiences and business transformation.

### Emirates Fast Food Company

**40x faster**

processing of HR requests, such as time off

[Learn more](#)

### TEWAY

**50% increase**

in maximum employee productivity

[Learn more](#)

#### Top transformative business outcomes to date

#### Enable transparent organization

Help ensure consistent and transparent organizational charts, resulting in an accelerated hiring process.

#### Help ensure a secure and viable workforce

Improve workforce continuity and system security, and plan for the unexpected using a standardized single sign-on and user identity and access management.

#### Make HR work flow better

Gain a central inbox and unified view for your workflow tasks, leading to a superior user experience and increased productivity.

#### Streamline multiple work assignments

Streamline the administration of concurrent employees and global assignment while synchronizing human resources and financial systems.

#### Enable faster invoice transactions

Automatically settle goods receipts, prevent invoice variances, complete transactions more quickly, and remove costly, non-value-added work with invoice self-billing.

#### Transform travel and expense mgmt.

Enhance and simplify the management of the travel booking and employee-initiated expense processes with a consistent experience.

#### Leverage AI capabilities for human resources

- Identify highly qualified talent in less time with intelligent resume analysis
- Help your workforce reach its potential with personalized development paths
- Simplify workflows and focus on critical tasks with intelligent workforce management

**>4.2M**

learning recommendations per month

Integrate to Innovate | **Process Transformation** | Underpinning Technology | Tools & Services

The diagram illustrates the SAP SuccessFactors ecosystem and the Recruit to Retire process flow. At the top, a horizontal timeline shows the process stages: Plan, Staff, Onboard, Work, Travel, and Pay & close. Below this, a central box represents the SAP SuccessFactors solutions, which include SAP Fieldglass solutions, SAP Concur solutions, SAP S/4HANA and SAP S/4HANA Cloud, and SAP Identity Management. To the right of this box are Partner solutions and Third-party solutions. Below the central box is a blue bar representing the SAP One Domain Model: Workforce | Cost center, which is part of the SAP Business Technology Platform. At the bottom, a white bar represents Unified services offering and operations. A link to [Learn more](#) about Recruit to retire is provided.

## Deliverables for 2024

- 01 With the SAP Master Data Integration service, clients can import workforce data from the SAP SuccessFactors Employee Central solution into the Concur Expense solution. As a result, clients can automatically schedule updates of employee data in Concur Expense through SAP Master Data Integration, significantly improving work efficiency.
- 02 SAP SuccessFactors solutions integrate with SAP Fieldglass solutions through SAP Master Data Integration. This results in simplified work order management for external workers and helps ensure that external worker data is reflected in SAP SuccessFactors solutions in a timely manner for accurate organizational chart views and headcount reporting.
- 03 By integrating the SAP SuccessFactors Employee Central Time Management application with SAP S/4HANA Cloud Private Edition, employees can benefit from a single experience across applications to record time. With this direct connection between HR, finance, and operations, organizations can improve resource allocation, reduce labor costs, and optimize billing activities and employee compensation.

## Outlook

- 01 Integration of funds and grants with SAP Concur and SAP SuccessFactors solutions will empower customers using SAP S/4HANA Cloud and SAP S/4HANA to perform funds checks and make funds reservations directly within the request and expense workflow. This will significantly improve client work productivity.
- 02 SAP Fieldglass solutions will introduce embedded analytics for external workforce management, offering a unified foundation with free operational reports and other advanced content. By integrating with the SAP Analytics Cloud solution, SAP Fieldglass solutions enhance data visualization, speed up value realization with prebuilt models, enrich data for better market intelligence and benchmarking, and help ensure an integrated experience across SAP applications.

←

19 | 28



# Suite Qualities

Integrated enterprises offer a consistent experience throughout end-to-end key processes. In 2020, SAP introduced distinct suite qualities that characterize integrated SAP applications.



## Seamless user experience

Improve the daily work experience of end users with a common look and feel for SAP solutions across end-to end business processes. The SAP Start site serves as a central entry point for cloud solutions from SAP and utilizes SAP Build Work Zone, delivering integrated search functionality and the SAP Task Center service integration for workflow approvals, tasks, and recommended business insights content. The scope includes content from SAP S/4HANA Cloud, SAP SuccessFactors solutions, and SAP Fieldglass solutions.. Additional cloud solutions are on SAP's road map. You can either use SAP Start “as is” and directly benefit from its features, choose to implement your own customized entry point scenario using SAP Build Work Zone.

**Enabled by:** [SAP Fiori user experience](#), [SAP Start](#), and [SAP Build Work Zone](#) on SAP BTP



## Consistent security and identity management

Manage the identities and access rights of your end users centrally and consistently across SAP applications by leveraging SAP Cloud Identity Services. At the same time, your end users benefit from the availability of the single-sign-on capability. In addition, the effort of IT security administrators is significantly simplified, since the identity distribution for the SAP solution portfolio can be controlled through a central endpoint.

**Enabled by:** [SAP Cloud Identity Services](#) on SAP BTP



## One workflow inbox

Complete business tasks proactively through a unified view of pending tasks across SAP solutions in both mobile and desktop environments. Speed up approvals to help ensure business continuity. The “one workflow inbox” capability is generally available as part of the SAP Task Center service, with integration into major cloud solutions from SAP, such as SAP S/4HANA Cloud, SAP S/4HANA; SAP SuccessFactors, SAP Ariba, SAP Concur, and SAP Fieldglass solutions; and more.

**Enabled by:** SAP Task Center, SAP Start, and SAP Mobile Start as part of [SAP Build Work Zone features](#) on SAP BTP



## Embedded and cross-product analytics

Make quick and confident decisions by relying on comprehensive analytical insights across various SAP solutions. Embedded analytics with SAP Analytics Cloud is generally available for SAP S/4HANA; SAP SuccessFactors, SAP Sales Cloud, SAP Service Cloud; SAP Business Network; SAP Business Network for Logistics; SAP Digital Manufacturing bundle for insights; and SAP Integrated Business Planning for Supply Chain. Analytical insights across multiple SAP and third-party applications can best be realized using the SAP Datasphere solution that enables data professionals to deliver smooth and scalable access to mission-critical business data.

**Enabled by:** [SAP Datasphere](#), [SAP Analytics Cloud](#) on SAP BTP



## End-to-end process blueprints

Reduce planning efforts for implementation projects and support architecture decisions by leveraging process blueprints following SAP Enterprise Architecture Methodology. End-to-end process documentation is linked to detailed, predefined integration in SAP Business Accelerator Hub. Architecture documentation is available for many solution scenarios (cloud and hybrid).

**Enabled by:** [SAP Business Accelerator Hub](#)



## Aligned Domain Models and integration content

Create connected experiences for your end-to-end business processes by sharing semantically aligned domain models across SAP applications with the help of SAP Master Data Integration, by leveraging harmonized APIs for process integration between SAP solutions and third-party solutions, and by adopting an event-based integration strategy. Pre-built integrations, APIs, data graphs, and business events help to jump-start your integration projects.

**Enabled by:** [SAP Business Accelerator Hub](#), SAP One Domain Model, [SAP Master Data Integration](#), SAP Event Broker service for SAP cloud applications, [SAP Integration Suite](#) on SAP BTP

### Learn more about suite qualities

- Follow SAP's integration strategy on [SAP Community](#) for the latest news and insights.
- Explore SAP's road maps using the [SAP Road Map Explorer tool](#)



## Coordinated lifecycle management

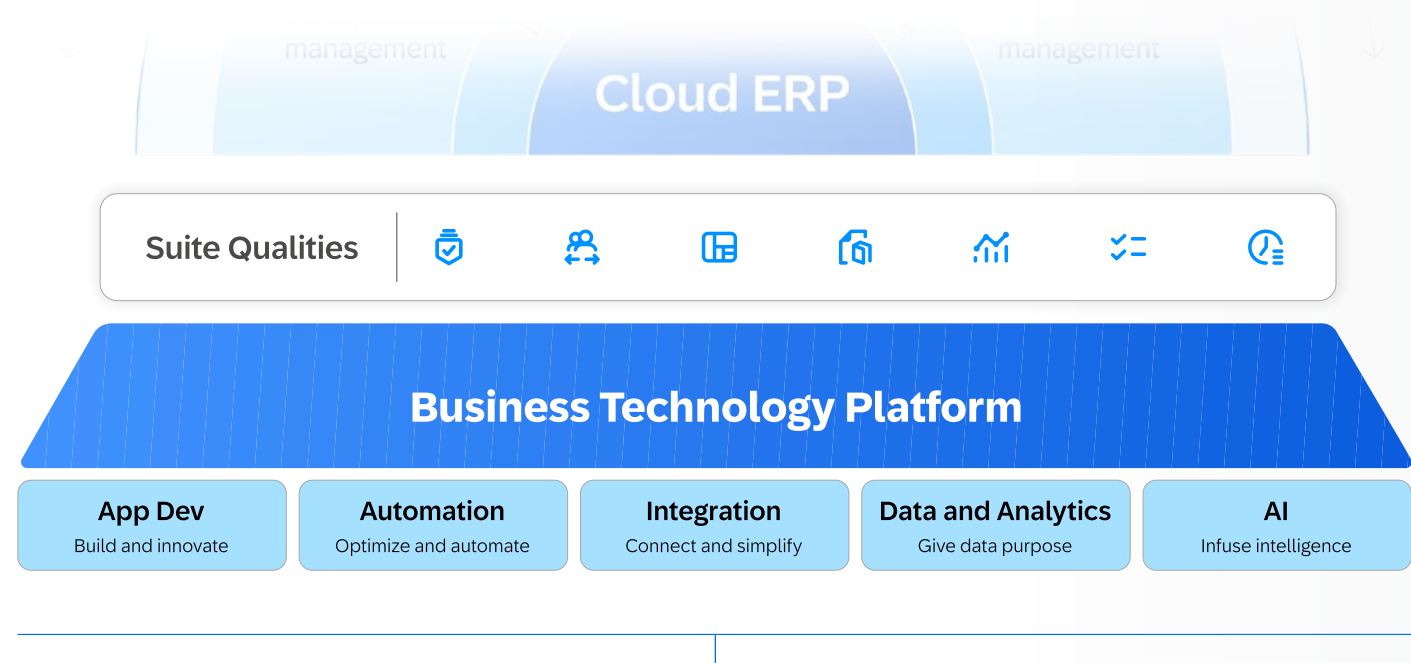
Benefit from a true software-as-a-service (SaaS) experience for provisioning, integration, and configuration by minimizing manual integration efforts through automation and setups managed by SAP. Industry cloud solutions, software for next-generation supplier management, and the SAP Multi-Bank Connectivity solution are already following this approach. Accelerate implementation projects by providing holistic landscape management, guided integration based on built-in defaults, as well as compelling operations and monitoring solutions. Guided implementation through a well-defined toolchain is available for most scenarios for SAP S/4HANA Cloud and select business processes across the SAP solution portfolio.

**Enabled by:** [SAP for Me portal](#), [SAP Cloud ALM](#), Cloud Integration Automation service, SAP Central Business Configuration tool on SAP BTP



# SAP Business Technology Platform

SAP BTP is the underlying technology for the suite of capabilities, \_\_\_\_\_, SAP, partner, and third-party applications. You can build new or extend your SAP applications, transform your data into value, infuse AI into your applications, and drive desired business outcomes.



## SAP BTP is the platform for SAP and our ecosystem

### SAP BTP provides a unified technology foundation for SAP applications

SAP BTP is at the center of the SAP technology strategy, helping SAP development teams build applications and business capabilities in a unified way. It includes the latest technology embedded into individual applications and across the SAP solution portfolio, along with consistent suite qualities that foster technical integration and a harmonized user experience.

### SAP BTP empowers customers and partners to innovate

SAP BTP also offers a well-curated set of commercial products and services that give customers and partners the opportunity to build, integrate, and run new cloud applications. Capabilities in SAP BTP also help create unique insights and innovation on top of and across SAP applications and third-party solutions.

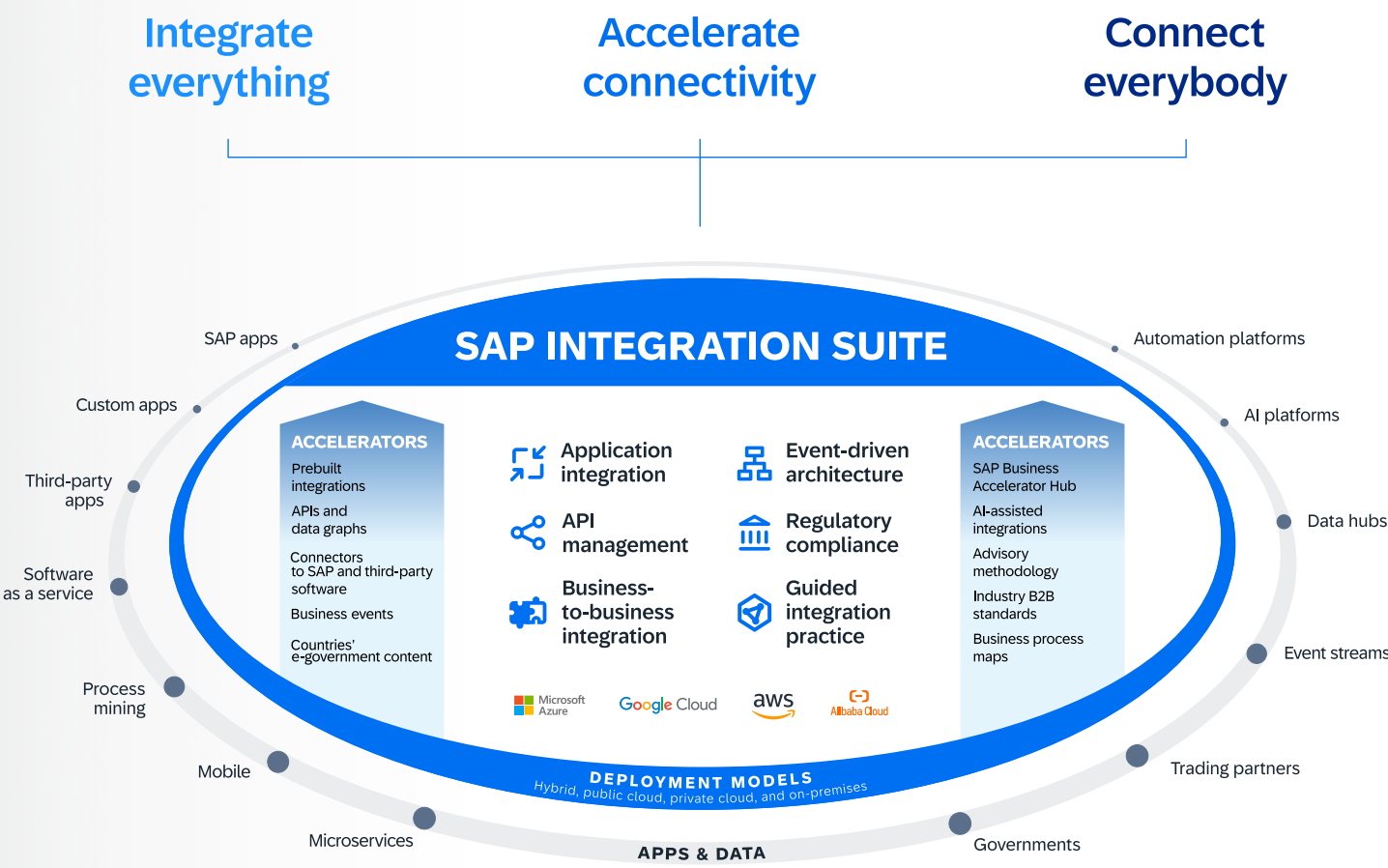
### Try SAP BTP before you buy

Many of the services for SAP BTP that are now available with the \_\_\_\_\_, allowing customers to test and explore platform services for app development, automation, integration, data and analytics, and AI use cases, with an easy path to productive use.



### SAP Integration Suite

SAP Integration Suite is a key technology in SAP BTP that can help you integrate your distributed and hybrid landscapes. The integration platform supports your end-to-end process automation, innovation, and business transformation initiatives across SAP and third-party applications now with proven pre-built integrations, APIs, connectors, and best practices.



### Leverage AI capabilities for integration

The AI road map will deliver increased benefits to the business and integration developers. It is focused on three vectors:

**Increase developer productivity**

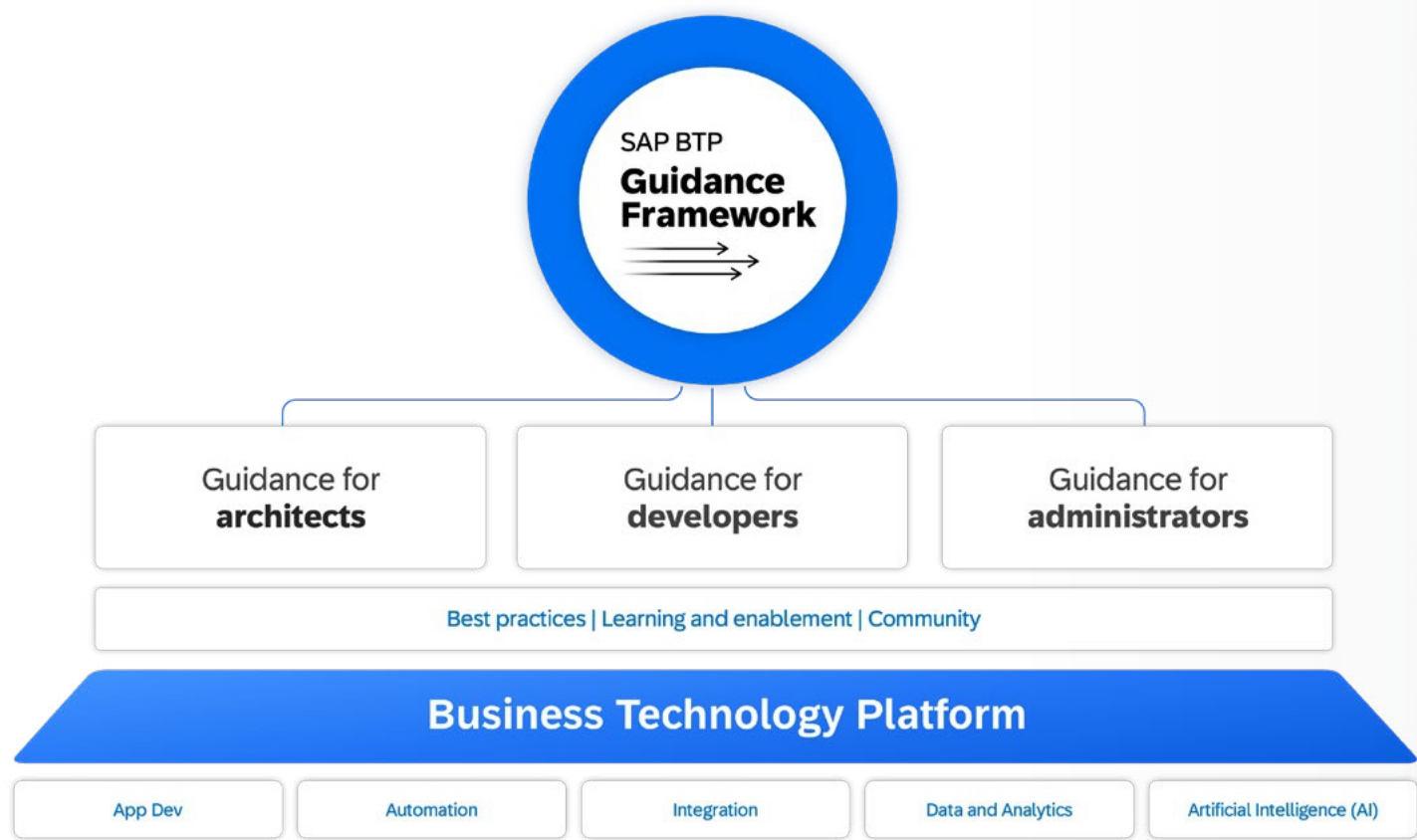
**Reduce transition time to the cloud**

**Improve operational excellence**



# SAP BTP Guidance Framework

Gain a central access point to build and run enterprise-grade solutions on SAP BTP [as your compass for Architecting](#), implementing, and operating solutions on SAP BTP. It provides a central access point for decision guides, reference architectures, methodologies, and many best practices.



Turn your compass toward architecting, developing, and operating solutions on SAP BTP. The framework comprises the following elements:

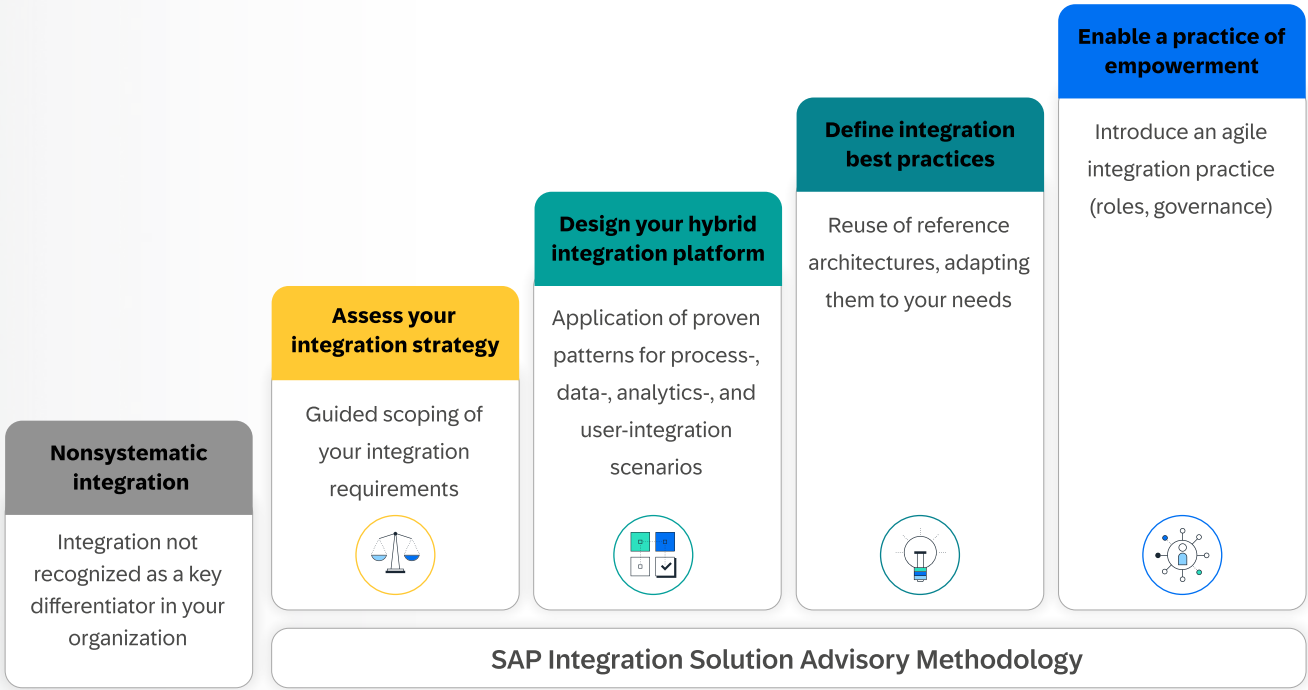
- **Decision guides**, which help you to identify the technology option that best fits your needs
- **Reference architectures** that allow you to explore how to architect solutions on SAP BTP with the help of curated solution templates
- **DevOps principles**, which enable your development and operations teams to be more efficient
- **Methodologies**, which offer you a guided approach toward increasing your cloud technology maturity level, covering both technical and organizational aspects
- **Recommendations** for different technology domains that help you to evaluate and choose the right implementation option

[Learn more](#)



## Design your “to-be” integration architecture

Your business is using and/or will adopt and use a wide variety of SAP business solutions. To extract maximum value from your business data and adapt to evolving business needs you need a consistent digital architecture. Explore how to design, implement and operate a consistent digital architecture using SAP BTP.



The [SAP Integration Solution Advisory Methodology](#) (ISA-M) provides a systematic and guided approach to the design and execution of your enterprise integration strategy. For this purpose, the methodology includes integration patterns, reference architectures, and additional best practices that help customers like [\\_\\_\\_\\_\\_](#) to drive innovation with a standardized approach to integration.

### Complementary services

SAP has a very well structured portfolio of professional and support services to advise and support you on how to adopt and deploy the rich plethora of services for SAP BTP. Amongst all this large portfolio of professional services, we would like to highlight some of them such:

- [Enablement service for SAP Integration Suite](#)
- **Integration planning service**
- **Infrastructure integration service**
- **Integration implementation service**

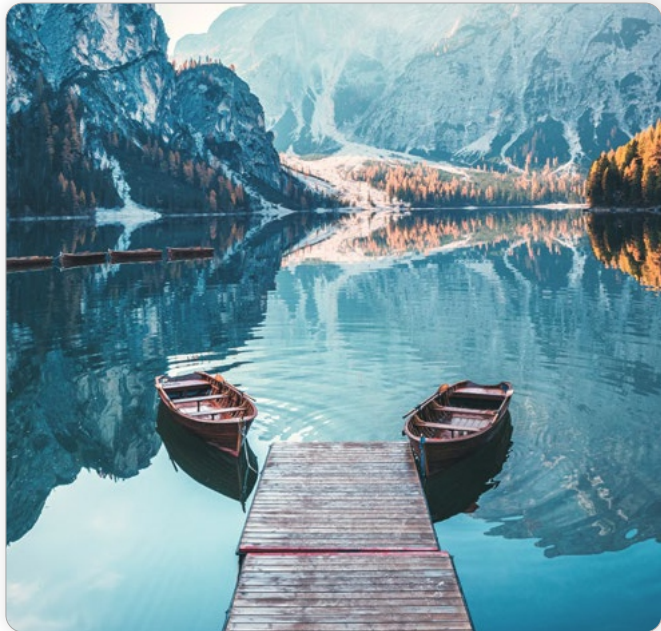
[Learn more](#)



# Driving business innovation together




Whether you're aiming to be more productive, working to be more effective, or pushing to improve innovation in a constantly evolving market, we offer multiple ways to help ensure your SAP solutions deliver the value you need.

Every digital innovation journey is unique, as each business has its own requirements, challenges, and capabilities. We provide **methodologies, guidance, and templates** on how to make adoption decisions and take advantage of adoption best practices.



## Start your journey to cloud ERP today

The RISE with SAP Migration and Modernization program comprises best practices, related tools, and services delivered through RISE with SAP Methodology. With a combination of financial incentives and a skilled community of partners, you can quickly realize significant value from your cloud ERP investment.

- **Methodology**  
Tools, best practices, and services to guide your migration
- **Incentives**  
Financial incentives that accelerate your time to value
- **Partners**  
A skilled community of partners ready to get you started today

[Get support from our Customer Success Team](#)

## We've got the right cloud ERP for you

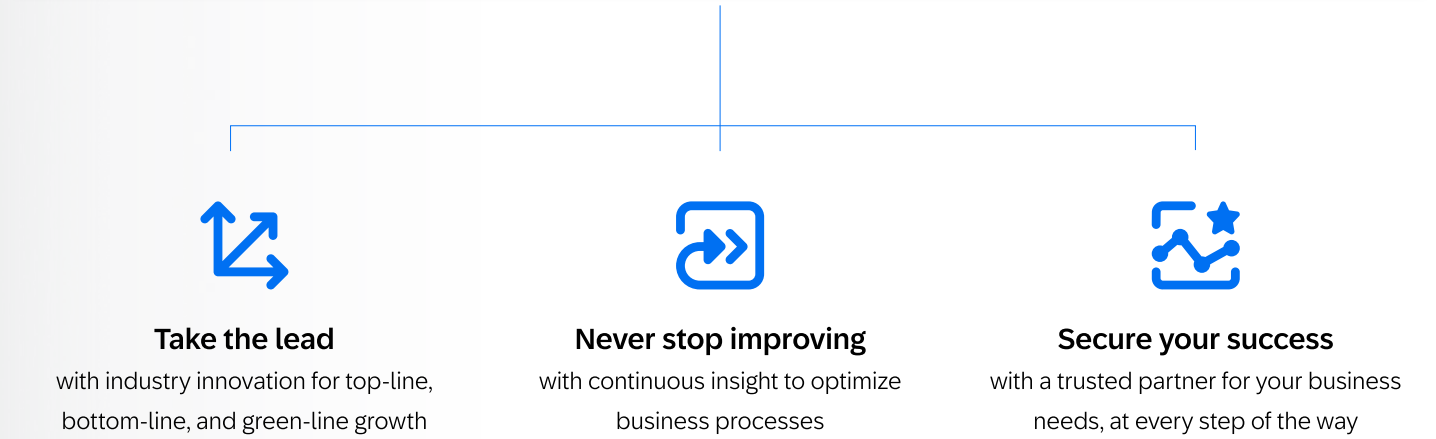
Whether adopting your first ERP or migrating from an existing one to the cloud, you can gain a comprehensive, modular solution including Business AI scenarios and analytics capabilities to move your business forward, while keeping the core clean.

Either migrate your current ERP to a tailored-to-fit cloud solution with RISE with SAP or start your cloud ERP journey by adopting a ready-to-run solution GROW with SAP. Get guidance across every phase of your migration journey with best practices from SAP and our skilled partner ecosystem.

**RISE WITH SAP**

**Explore RISE with SAP and GROW with SAP**  
Either migrate your current ERP to a tailored-to-fit cloud solution with [RISE with SAP](#) or start your cloud ERP journey by adopting a ready-to-run solution [GROW with SAP](#). Get guidance across every phase of your migration journey with best practices from SAP and our skilled partner ecosystem.

**GROW WITH SAP**







# Get Engaged

Check out our key resources and start your integration projects right away:

- Get started with [SAP Business Technology Platform](#)
- Use [SAP BTP Guidance Framework](#) as your compass for architecting, implementing, and operating solutions on SAP BTP
- Explore upcoming product innovations and updates on [SAP Road Map Explorer](#)
- Learn more about missions, services, and reference architectures on [SAP Discovery Center](#)
- Discover [SAP Business Accelerator Hub](#) to accelerate your integrations, extensions, and innovations

Do you need support? [Contact us.](#)